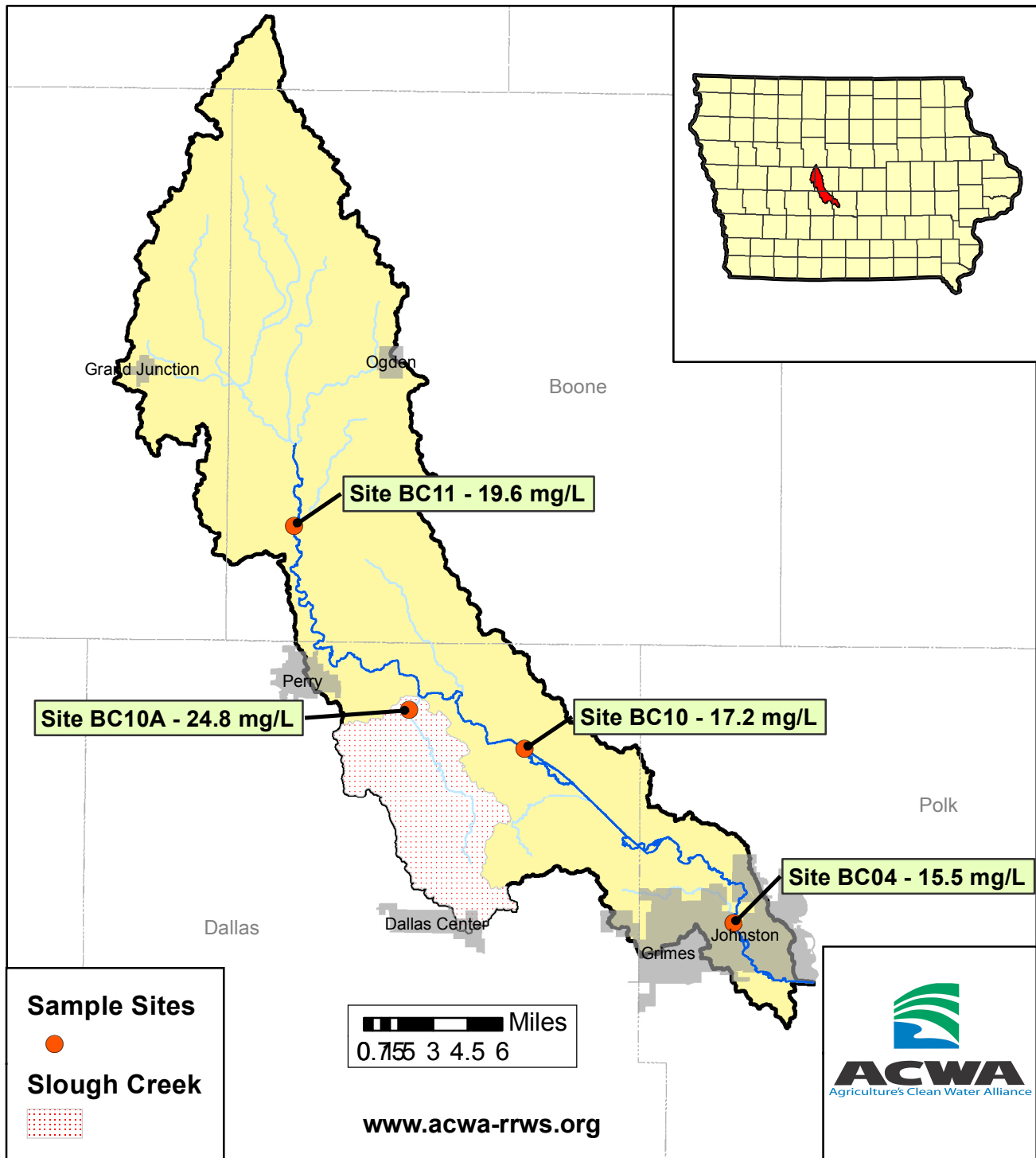


2013 Ave. Nitrate Concentrations-Beaver Creek

April - August



2013 Average Nitrate-N Concentrations

Site_Id	Stream_Name	April	May	June	July	August	Annual
BC11	Beaver Creek	19.7	26.1	26.4	20.9	5.1	19.6
BC10A	Slough Creek	23.8	25.7	29.8	28.7	15.9	24.8
BC10	Beaver Creek	18.3	19.2	23.3	20.3	5.0	17.2
BC04	Beaver Creek	15.6	17.9	21.2	19.0	4.0	15.5