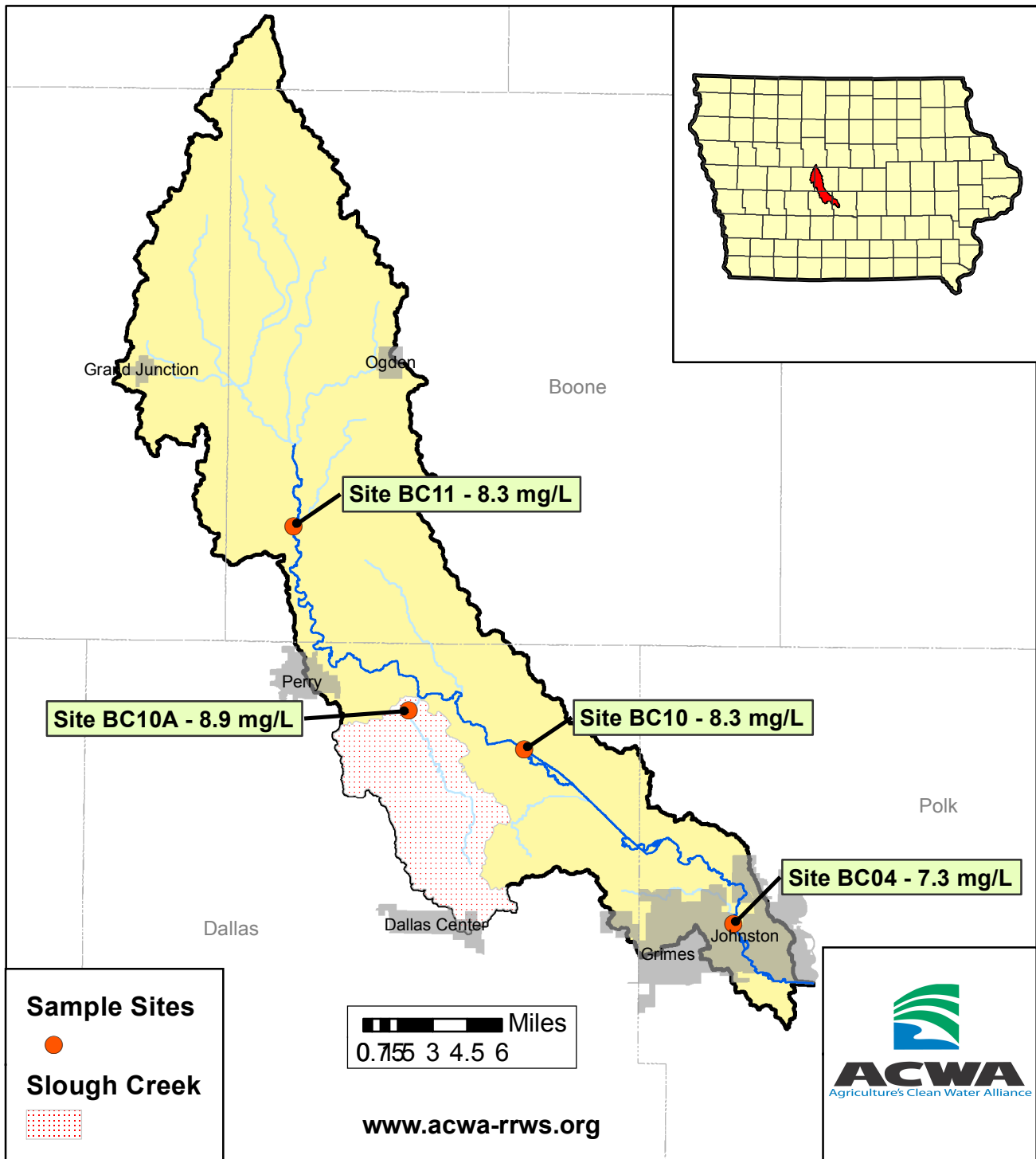


2009 Ave. Nitrate Concentrations-Beaver Creek

April - August



2009 Average Nitrate-N Concentrations

Site_Id	Stream_Name	April	May	June	July	August	Annual
BC11	Beaver Creek	8.2	10.4	11.7	9.4	1.7	8.3
BC10A	Slough Creek	9.9	12.0	13.0	7.6	2.0	8.9
BC10	Beaver Creek	8.2	10.0	11.7	9.1	2.7	8.3
BC04	Beaver Creek	7.2	9.1	10.5	8.1	1.5	7.3